



# GAT MONTHLY MEMBERSHIP PROGRESS REPORT

Results as of: 5/31/2022

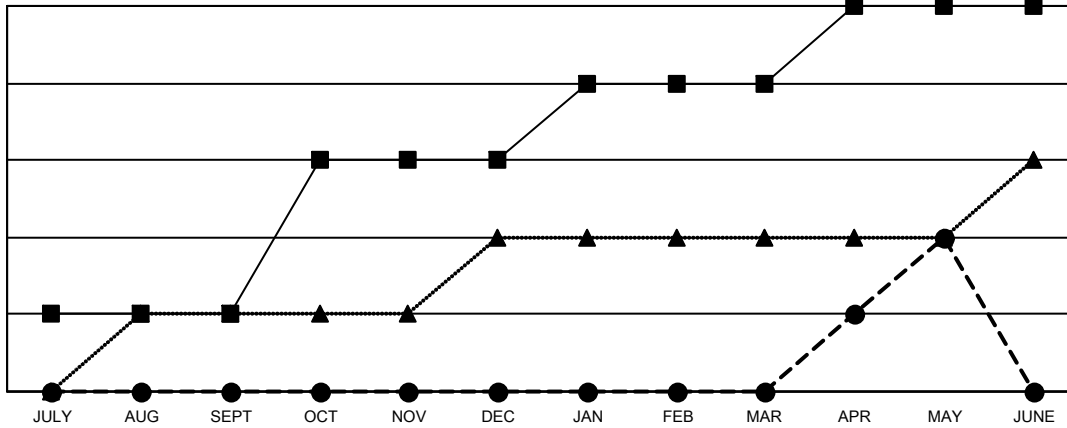
Multiple District 34

LOCATION: ALABAMA

Clubs			
RESULTS FOR 2021-2022			
QUARTER	NEW CLUB GOAL	NEW CLUBS	DROPPED CLUBS
JULY/AUG/SEPT	1	0	1
OCT/NOV/DEC	2	0	1
JAN/FEB/MAR	1	0	1
APR/MAY/JUNE	1	2	0

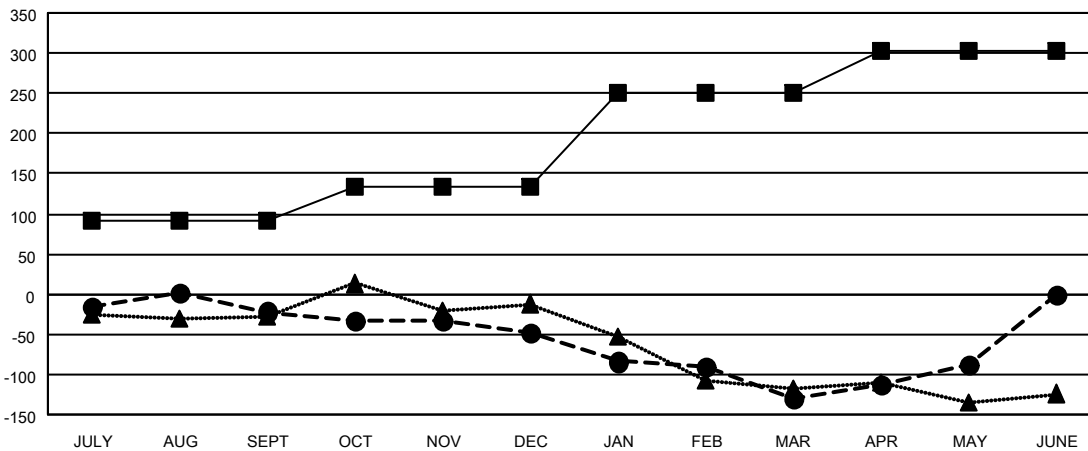
Members			
RESULTS FOR 2021-2022			
QUARTER	MEMBER GROWTH NET GOAL	MEMBER GROWTH ACTUAL	DROPPED MEMBERS ACTUAL (including transfers)
JULY/AUG/SEPT	92	101	114
OCT/NOV/DEC	42	72	92
JAN/FEB/MAR	117	68	142
APR/MAY/JUNE	52	134	90

GOALS AND ACTUAL NEW CLUBS CUMULATIVE



- CURRENT YEAR GOALS FOR NEW CLUBS
- CURRENT YEAR ACTUAL NEW CLUBS
- ▲- LAST YEAR ACTUAL NEW CLUBS

GOALS AND ACTUAL MEMBERS CUMULATIVE



- MEMBER GROWTH NET GOAL
- MEMBER GROWTH ACTUAL
- ▲- LAST YEAR MEMBERSHIP ACTUAL

DROPPED CLUBS: 3	72 CLUBS OF 118 ADDED 1 OR MORE NEW MEMBERS	<b>GENDER DISTRIBUTION</b>
<b>DROPPED MEMBERS</b>	<a href="#">CLICK HERE FOR CUMULATIVE MEMBERSHIP DATA</a>	MALE 1,823 (66.41%)
DECEASED 50		FEMALE 922 (33.59%)
CLUB CANCELLED 16		NON BINARY 0 (0.00%)
OTHER 372		PREFER NOT TO ANSWER 0 (0.00%)
<b>TOTAL 438</b>		<b>TOTAL FAMILY UNIT MEMBERS 458</b>
		FAMILY MEMBERS PAYING HALF DUES 235